



## Video Projector Shelf

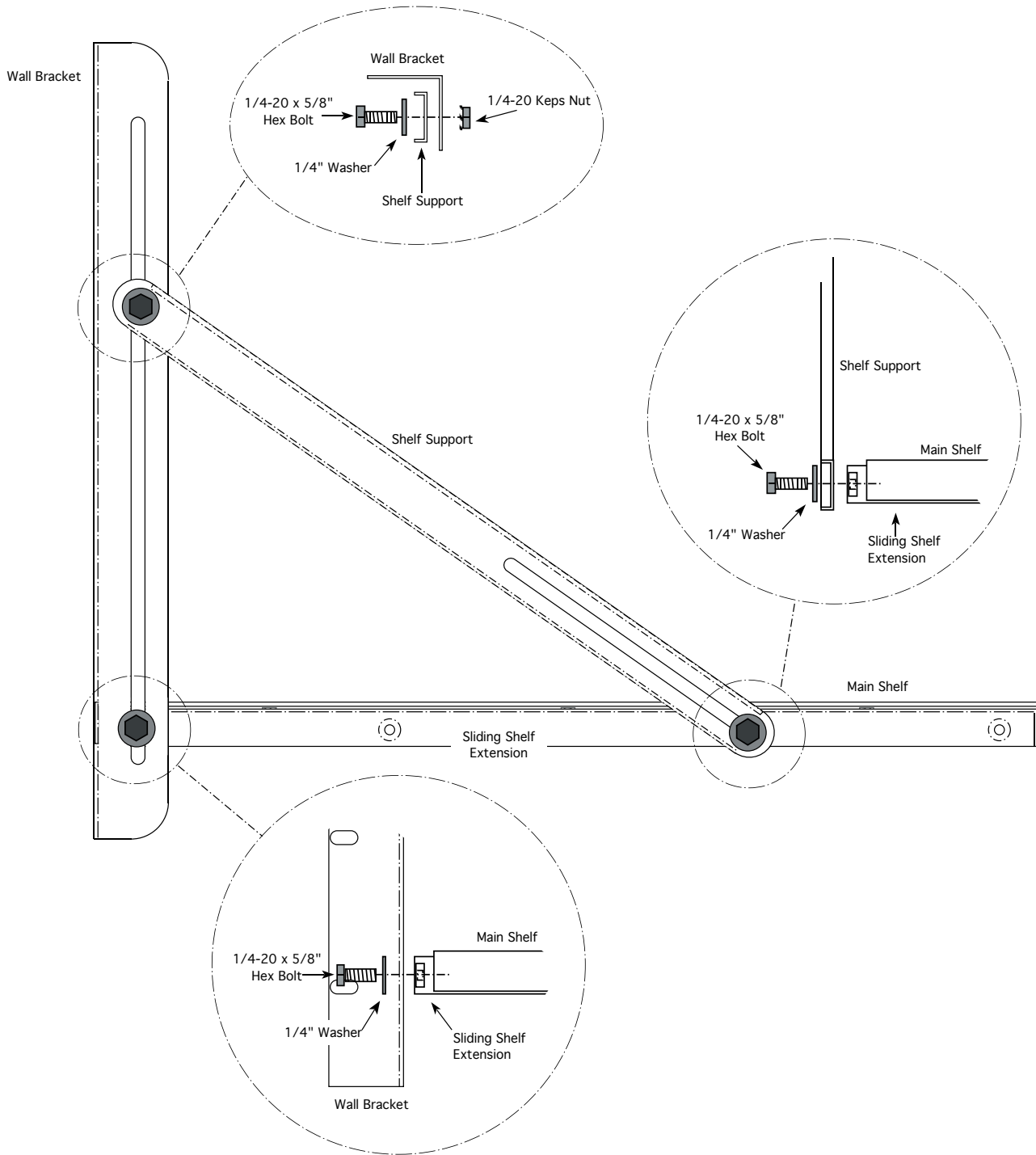


The new Video Projector Shelf from Kelmar offers the ultimate in flexibility and strength in a simple, yet, cost effective package. All components are heavy 16 gauge steel, finished with a black epoxy powder coated finish. The shelf is fully adjustable for projecting either on a down or up angle. The shelf is expandable from 15" up to 23-1/2" in width and is a full 19" deep. The supports can be located above or below the shelf to accommodate all current or future projectors.

Clear, simple, instructions complete with all necessary hardware to install on all steel portframes make field installation a breeze.

Kelmar Systems Inc., 284 Broadway, Huntington Station, NY 11746 • 631.421.1230 • FAX 631.421.1274

Website [WWW.kelmarsystems.com](http://WWW.kelmarsystems.com) E-mail [Sales@kelmarsystems.com](mailto:Sales@kelmarsystems.com)



**This kit contains:**

- 2) P/N 2028 Wall Mounting Brackets
- 2) P/N 2029 Adjustable Shelf Supports
- 1) P/N 2030 Main Shelf
- 2) P/N 2031 Shelf Sliding Extension
- 6) 1/4-20 x 5/8" Hex Bolts
- 8) 1/4-20 Keps Nut
- 12) 1/4" Flat Washers
- 10) #10 x 1/2" Self Tapping Sheet Metal Screws